

BERTHOUD- HERITAGE METRO DISTRICTS

HERON LAKES SNOW REMOVAL

Sidewalks next to and adjacent to around individual homes/lots are the individual homeowner's/lot owner's responsibility to clear, including sidewalks on the side of the home, for corner lots for example, and around the mailbox if on or adjacent to your lot.

Pile snow in the grass areas of your property, not in the street. Do not pile snow on or around fire hydrants. Also clearing flow pans and gutters in front of your home to help eliminate ice backups in storm drains is helpful. Parking your vehicles in driveways is a tremendous help to snow removal crews. Remove vehicles from the street, so that snow removal equipment can plow the area safely if plowed. Plow one lane of street only.

Builders in the area that own a lot, or several lots are responsibility for the snow removal on the walks around their lot/lots.

Streets are owned by the Town of Berthoud, but plowing the streets will be the responsibility of the Berthoud Heritage Metro District. The District will be plowing the streets within 24 hours of the last snowfall, per their approved snow removal guidelines. Small depths of snow if expected to melt quickly may not be plowed. Plowing one lane width only.

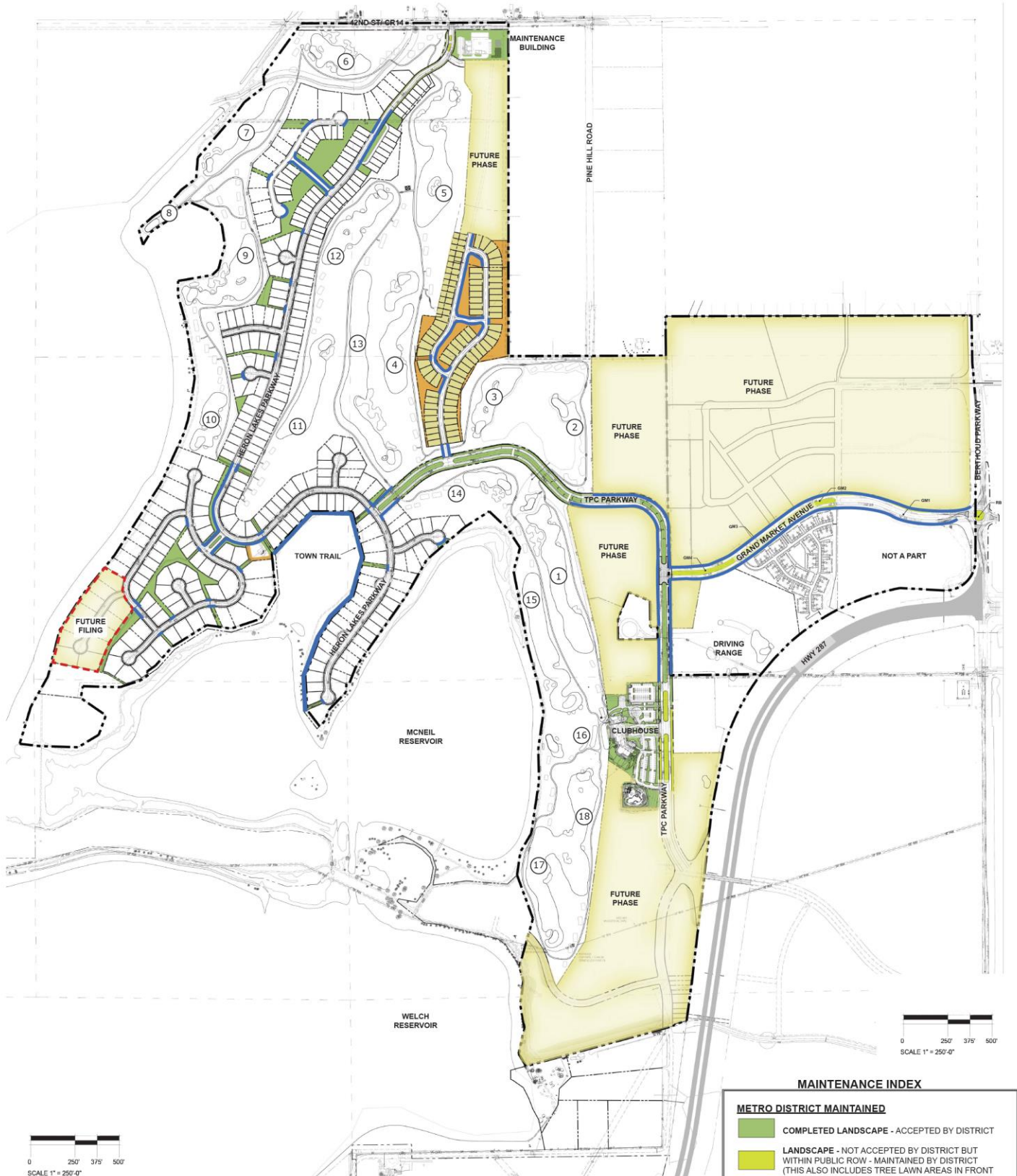
Perimeter sidewalks and sidewalks adjacent to the **Berthoud Heritage Metro District** communal areas/open space are generally the responsibility of **Berthoud Heritage Metro District**.

The District will send out maintenance crews to remove snow within 24 hours of the last snow fall, subject to snow removal guidelines. Snow service operations cannot eliminate all dangerous/slippery conditions on the property. Slippery conditions are an inherent danger in all snowy or icy areas, whether serviced or not. **Please be careful.**

In the event of significant snow fall, **Berthoud Heritage Metro District** encourages neighbors to help one another if possible. Neighbors that worked together can clear a path to the main streets that allows them to get out of the community sooner than others. We would encourage homeowners to help others when possible. However, be aware that damage to landscape, irrigation etc. is the responsibility of the person removing the snow.

If there are any questions regarding the snow removal operations within **Berthoud Heritage Metro District**, please contact the **Berthoud Heritage Metro District at 970-488-2828**, or check our snow removal map on our web site at <https://www.berthoudheritagemd.live/> under the "Operations and Maintenance" tab

BERTHOUD- HERITAGE METRO DISTRICTS



HERON LAKES - SNOW REMOVAL MAP
11.10.23

LEGEND

— SNOW REMOVAL

MAINTENANCE INDEX

METRO DISTRICT MAINTAINED

- COMPLETED LANDSCAPE - ACCEPTED BY DISTRICT
- LANDSCAPE - NOT ACCEPTED BY DISTRICT BUT WITHIN PUBLIC ROW - MAINTAINED BY DISTRICT (THIS ALSO INCLUDES TREE LAWN AREAS IN FRONT OF PRIVATELY OWNED LOTS THAT ARE NOT DEVELOPED)

DEVELOPER MAINTAINED

- NON-IRRIGATED NATIVE (TO BE MAINTAINED AS NEEDED)
- LANDSCAPE AREAS- NOT YET ACCEPTED BY DISTRICT FOR MAINTENANCE (TO BE MAINTAINED BY DEVELOPER)